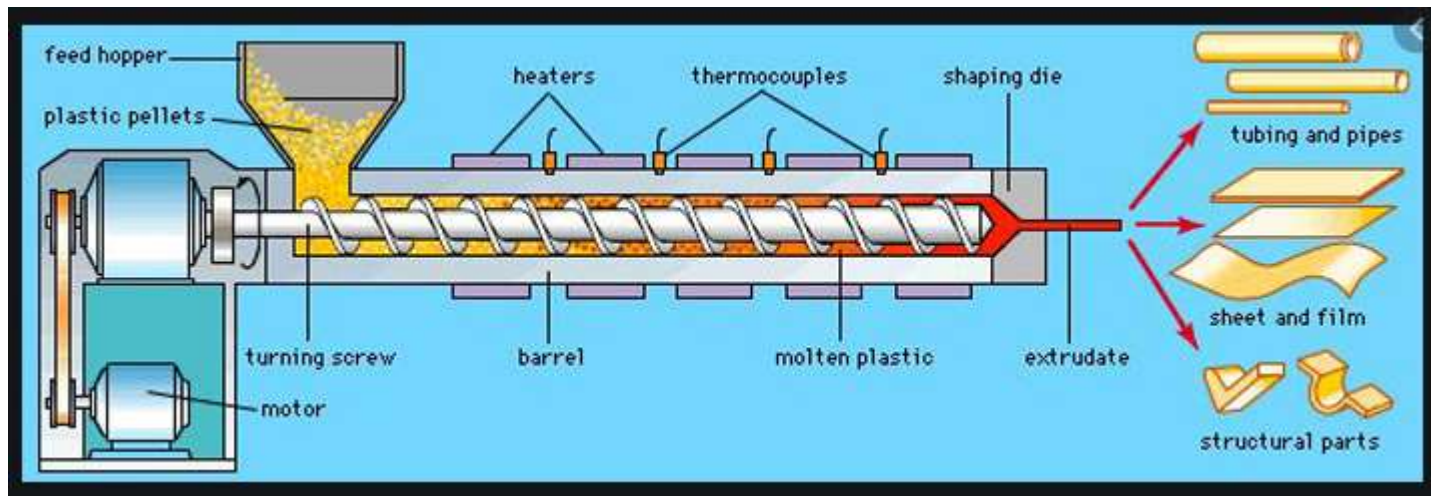


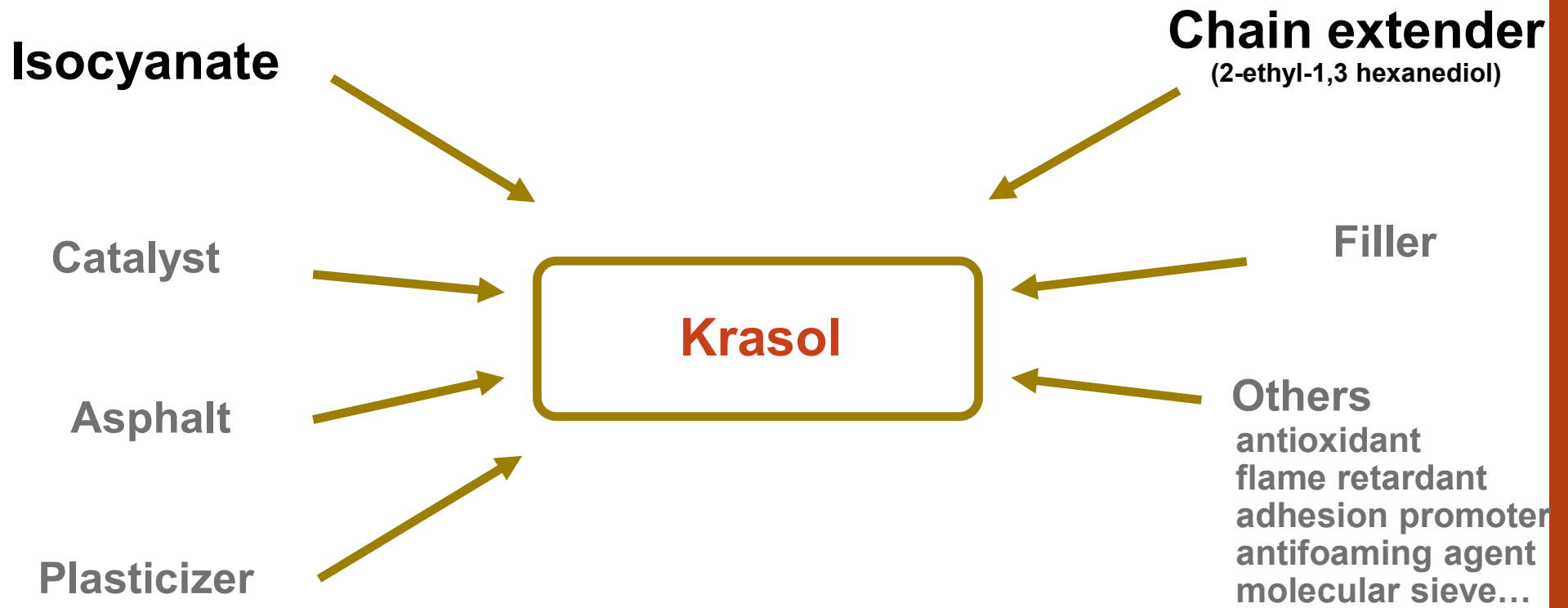
CRAY VALLEY TECHNOLOGIES KRASOL FOR TPU



KRASOL® RESINS – PRODUCT RANGE

Krasol® Resins	Mn (g/mol)	Tg (°C)	Vinyl (%)	Viscosity (cps@ 25°C)	Functionality
Diols					
LBH CF 2000	2100	-35	65	13000	secondary
LBH CF 3000	3000	-35	65	13000	secondary
LBHP CF 2000	2100	-35	65	20000	primary
LBHP CF 3000	3100	-35	65	20000	primary
Hydrogenated					
HLBHP CF 2000	2100	-46	na	1750(60°C)	primary
HLBHP CF 3000	3100	-46	na	3000 (60°C)	primary
Monols					
LBH CF 5000M	5000	-45	65	25000	secondary
HLBH CF 5000M	5000	-57	na	65000	secondary
BioSourced					
F 3000	3000	-65	40 (3,4 vinyl)	1700	secondary
F 3100	3000	-56	na	15000	secondary

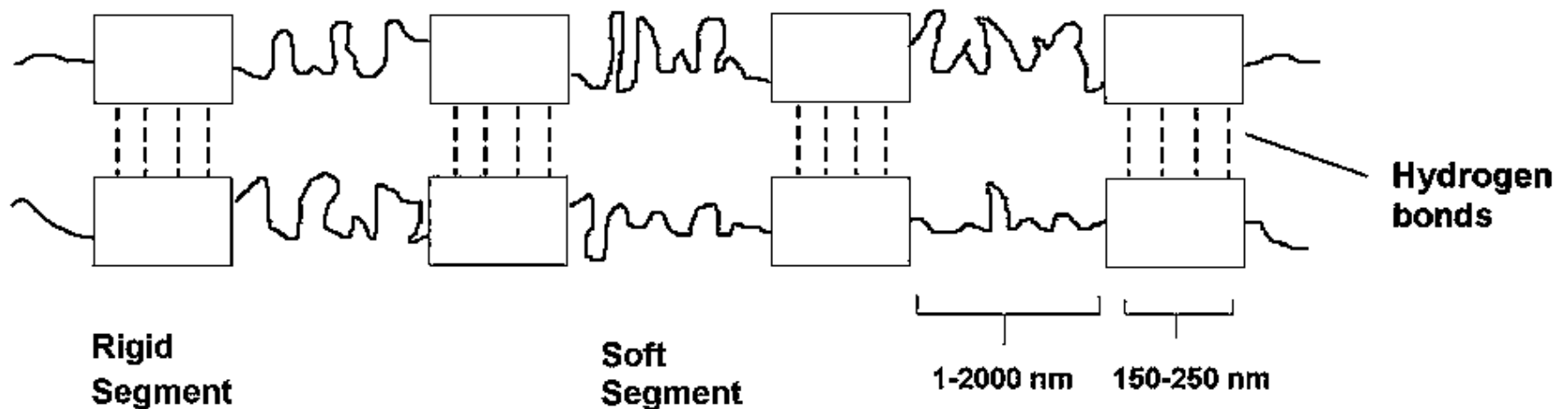
Formulation for Polybutadiene based TPU



Variety of usages in different industries

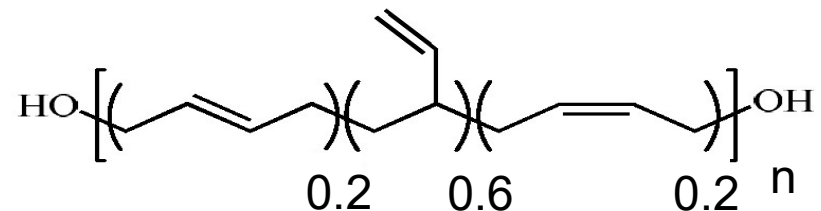
Thermo Plastic Urethane (TPU)

- TPU are used in a wide range of CASE application
- Succession of rigid and soft segment



- Soft segments are long-chain diols

- Krasol, Polybutadiene diols, are used as long-chain diols



Advantages of Polybutadiene based TPU

- **Low density (0.95 to 1.10)**
- **Low Moisture Vapour Transmission Rate (MVTR)**
- **Higher acid and base resistance**
- **Higher electrical resistivity**
- **Co-reticulation with diene-elastomers (S and peroxide curing)**
- **Allows rubber to polyurethane adhesion**
- **Good adhesion to glass and metal**
- **Flexible at low temperature**

Miscibility of Krasol with other Polyols

Polyol	Krasol LBH 3000 (wt. %)
Polypropylene Glycols	
Arcol PPG 425	~50%
Arcol LHT 42	completely miscible
Arcol LG 56	completely miscible
Arcol PPG 2000	completely miscible
Arcol PPG 4000	completely miscible
Polytetramethylene Glycol	
Polymeg 650	10
Polymeg 1000	30
Polymeg 2900	20

Please contact our sales representative for further information

DISCLAIMER

Due to the number and variety of applications for which this product may be purchased and because CRAY VALLEY BU has no control over the conditions under which its product may be used by others, we do not recommend specific applications or product designs or assume responsibility for use results obtained or suitability for specific applications. No statement contained herein shall be construed as a license to operate, or as a recommendation or inducement to infringe existing patents or as an endorsement of products of specific manufacturers or systems.

NO OTHER WARRANTY OF ANY KIND WHATSOEVER, EITHER ORAL OR WRITTEN, INCLUDING IMPLIED WARRANTY OF MERCHANTABILITY, FITNESS FOR A PARTICULAR PURPOSE, OR OTHER WARRANTY OF QUALITY IS EITHER EXPRESSED OR IMPLIED FOR THE PERFORMANCE OF THIS PRODUCT. CRAY VALLEY SHALL NOT BE LIABLE FOR SPECIAL, INCIDENTAL AND/OR CONSEQUENTIAL DAMAGES, EVEN IF CRAY VALLEY HAS BEEN NOTIFIED OF THE POTENTIAL OF SUCH A LOSS OR CLAIM.